

Body Wavy Top Closure with Silk Top Option



Body Wavy Top Closure



A top closure hair piece is a unique hair piece that is actually stitched to a cornrow base of braids close to the crown of the head, as per the usual hair weave technique. This piece is designed to augment regular hair extensions for the top of the head. Product summary Available in Indian Remy, Chinese Remy, Brazilian, Malaysian, European and Peruvian Human Hair. Available in Sizes: 4x4, 5x5, and 6x6 Knots: Bleached and invisible Baby Hair: Included in front Part Direction: Can part in any direction Base Dimensions: 3.5 to 4 wide, 4 front to back Color: In Stock available in natural color, #1, 1B, 2, 4. Custom Colors, Highlights are welcome!

Rating: Not Rated Yet

Price

\$83.40

\$83.40

Starting at \$83.40

\$139.00

\$-55.60

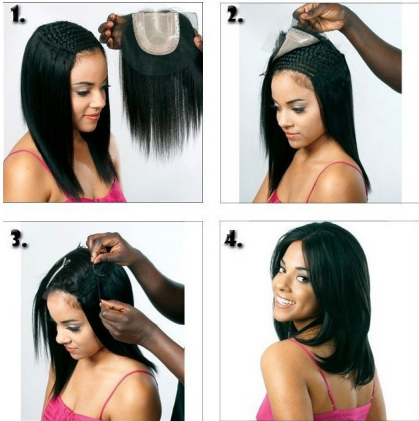
3-5 Days

★★★★

[Ask a question about this product](#)

Manufacturer [Ahava](#)

Description



Reviews

Wednesday, 17 September 2014

Peggy O'Brien - AWE! So sweet. A beautiful culpoe in beautiful settings. I love the fall colors and the ring tucked in the flower. I see Tank was cooperative Absolutely gorgeous!

Tuesday, 22 October 2013

The texture of the hair is great I was able to bleach knots and hair still curled back after washing and conditioning. I wore closure on vacation and it stay nice while I went swimming.

Thursday, 17 October 2013

The best!! So realistic, from the texture to the parting and blends perfect with the rest of the hair.

[More reviews](#)